

# SICKLE CELL DISEASE HEALTHY VOLUNTEERS & PATIENTS NEEDED



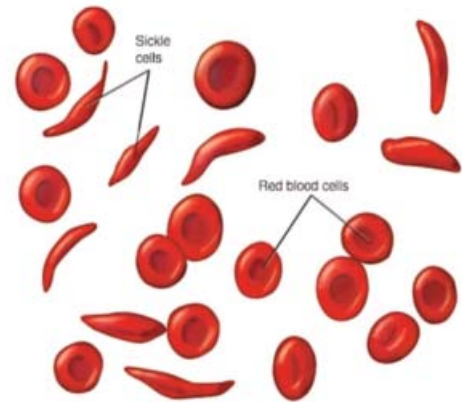
Doctors at the National Institutes of Health (NIH) seek healthy volunteers (with or without a sickle cell trait) and patients with sickle cell for a research study. Sickle cell disease is a genetic blood disorder that occurs mainly in people of African descent. Study participants will have a one-time visit to the NIH to provide blood samples. Researchers hope this study will help us better understand sickle cell disease.

## To be eligible for this study, you must:

- ◇ Be between the ages of 18 to 80 years
- ◇ Describe yourself as African or African American
- ◇ Not have had a blood transfusion within the last 8 weeks
- ◇ Not be pregnant

## What is involved?

- ◇ Blood collection
- ◇ Genetic and DNA testing
- ◇ Compensation is provided



**Location:** The NIH Clinical Center is America's Research Hospital is located in Bethesda, Maryland, on the Metro red line (Medical Center stop).

## For more information, contact:

**NIH Clinical Center Office of Patient Recruitment**

**1-800-411-1222** (refer to study 18-H-0146)

prpl@cc.nih.gov

TTY for the deaf or hard of hearing: 1-866-411-1010

Se habla español

<https://go.usa.gov/xP8Hx>

NIH...Turning Discovery Into Health®



National Heart, Lung,  
and Blood Institute